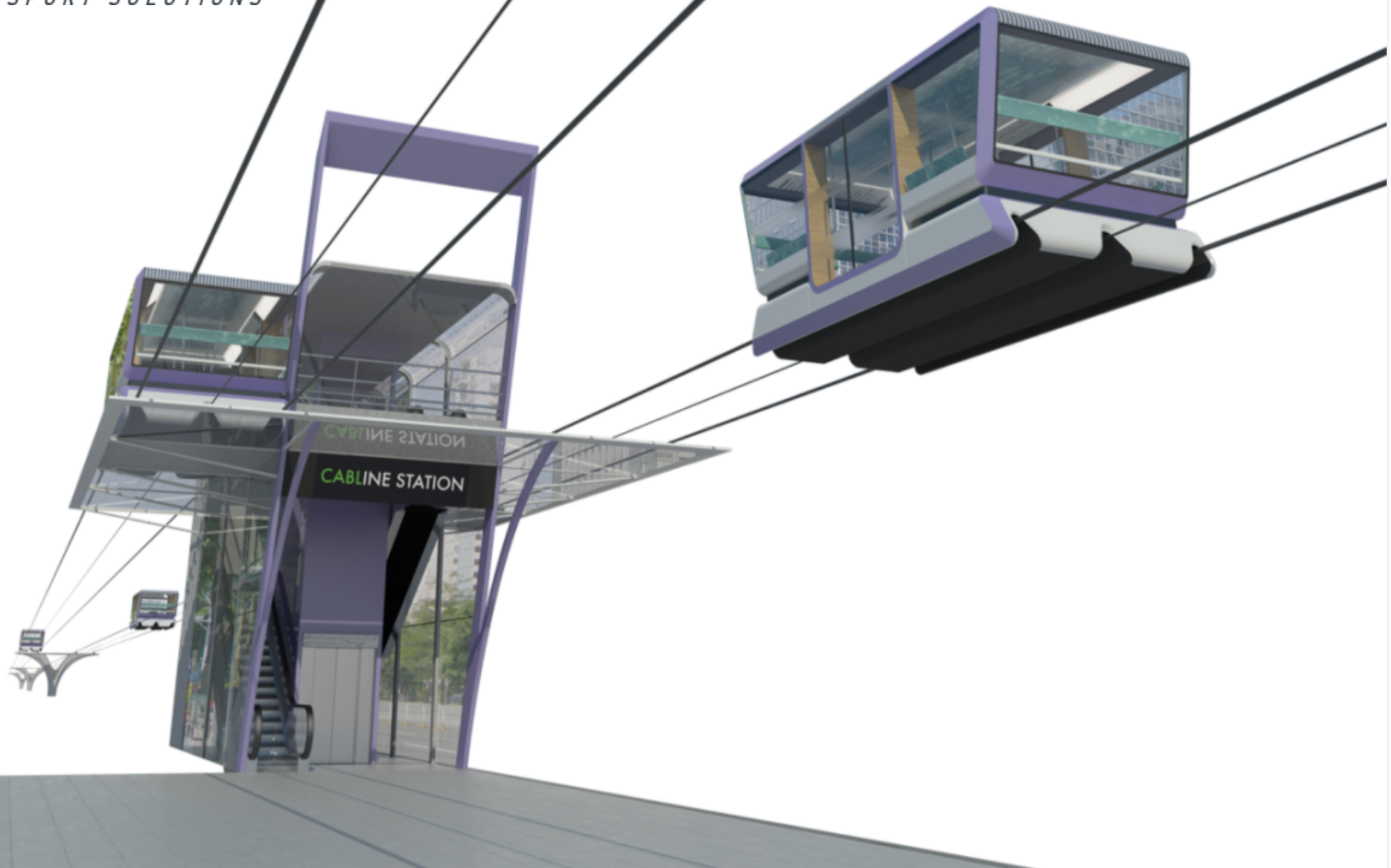


C A B L I N E



INNOVATIVE TRANSPORT SOLUTIONS



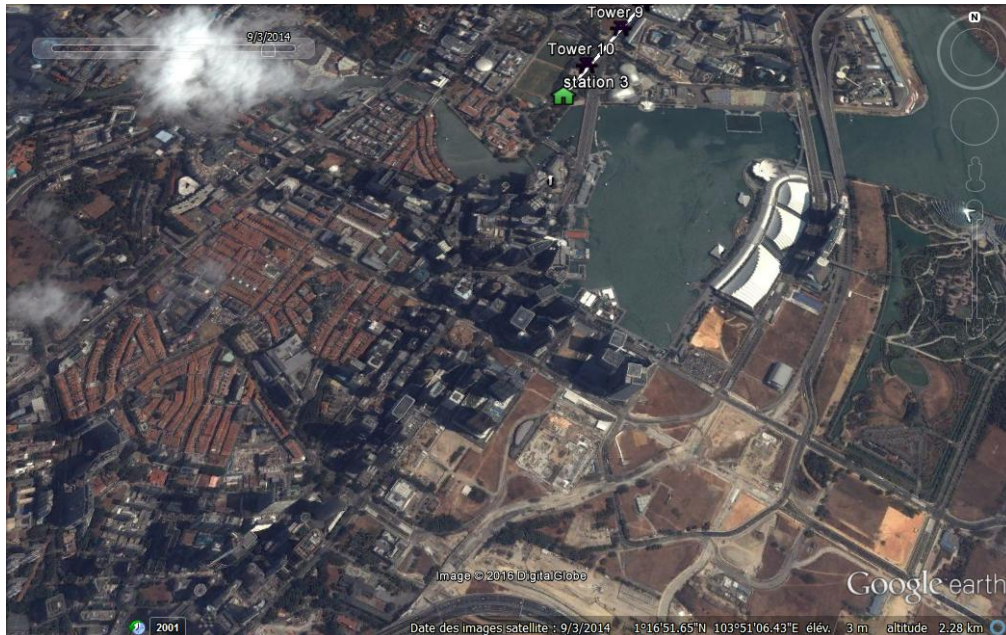
C A B L I N E

CABLINE is an **innovative** cable transport system



- With its strong industrial expertise in **cable transport** for ski Resorts, MND has developed an innovative transport solution: **the CABLINE**.
- **CABL**INE is ‘Zero-Carbon Emission’, **Safe, Quiet & Comfortable, Efficient, Economical, Environmental friendly.**

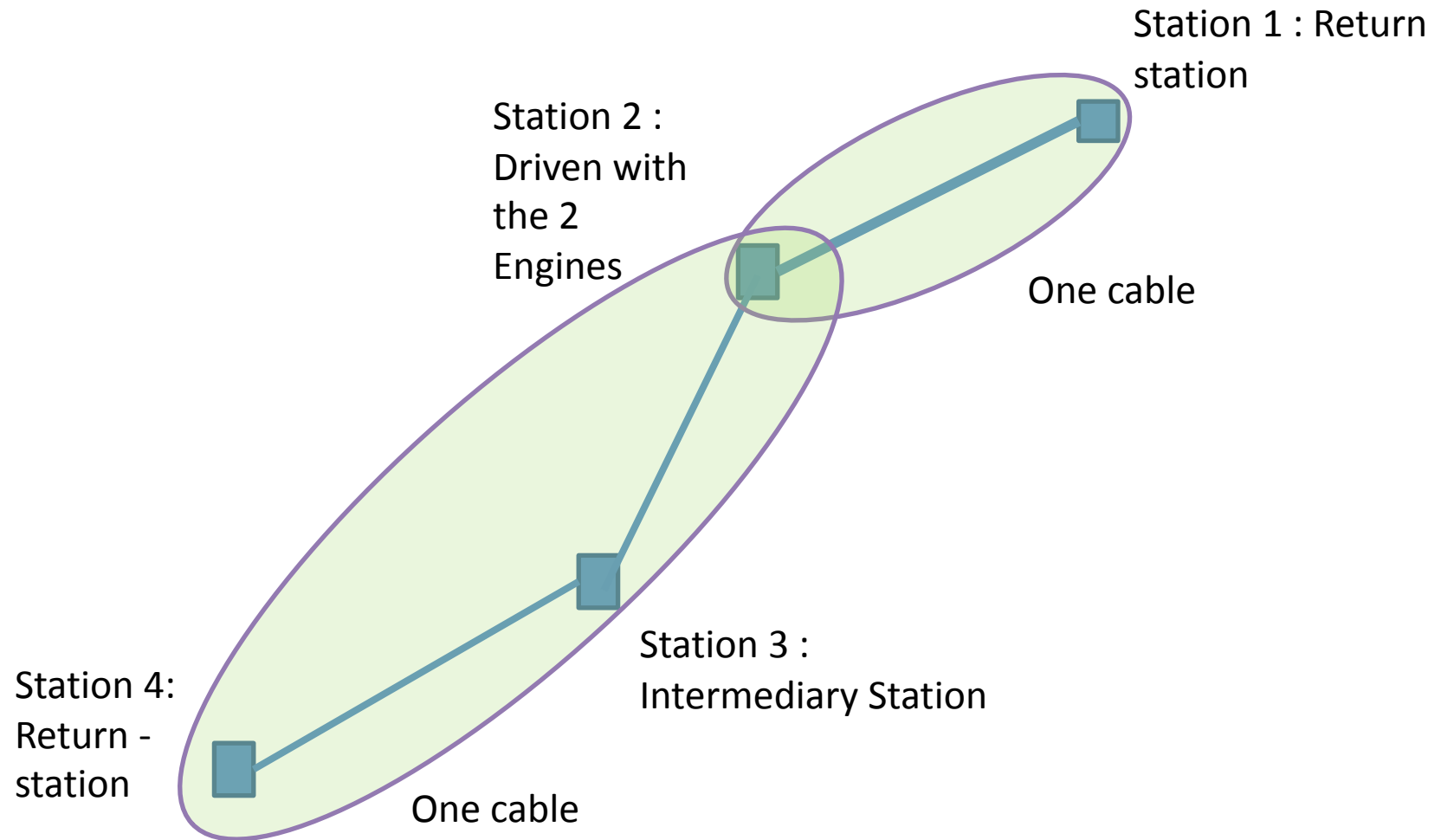
Why SINGAPORE?



- Towards achieving a 'Car-Lite' Singapore
- Branding Singapore, pioneering a 'zero-carbon' mobility technology
- Showcase new alternative and effective urban transportation infrastructure
- Scalable Modular Investment: Possibility to extend the CABLINE in phases



Possible Line configuration

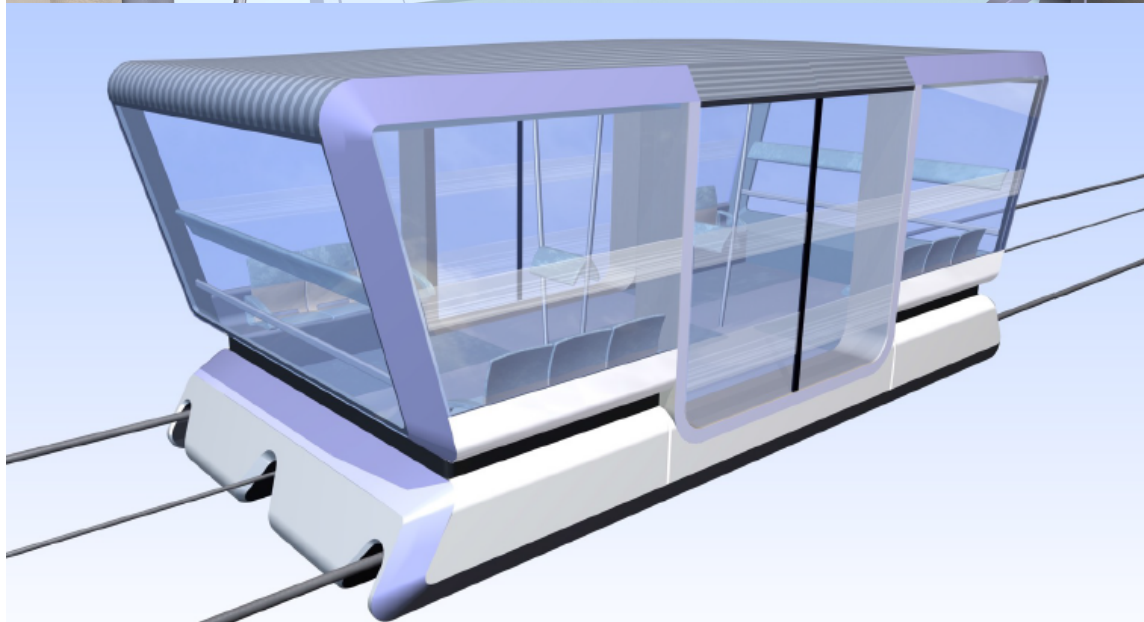
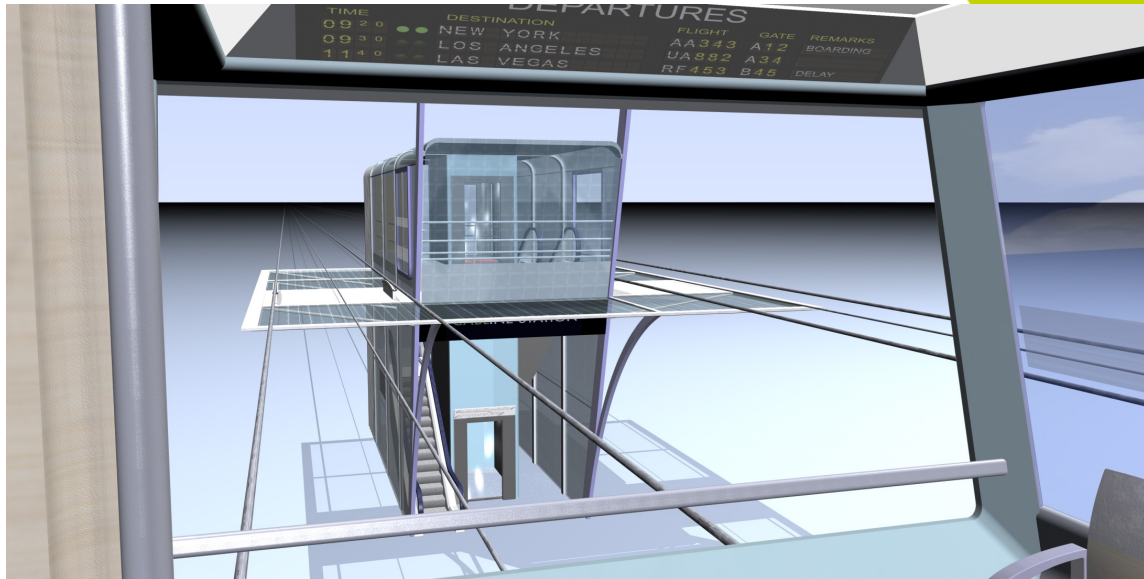




Operation

- Waiting time between 2 cabins: 1min12s
- Speed: 6 m/s
- Stop in station: 20s to 30s
- Whole line journey duration: around 11 min

CABLINE features

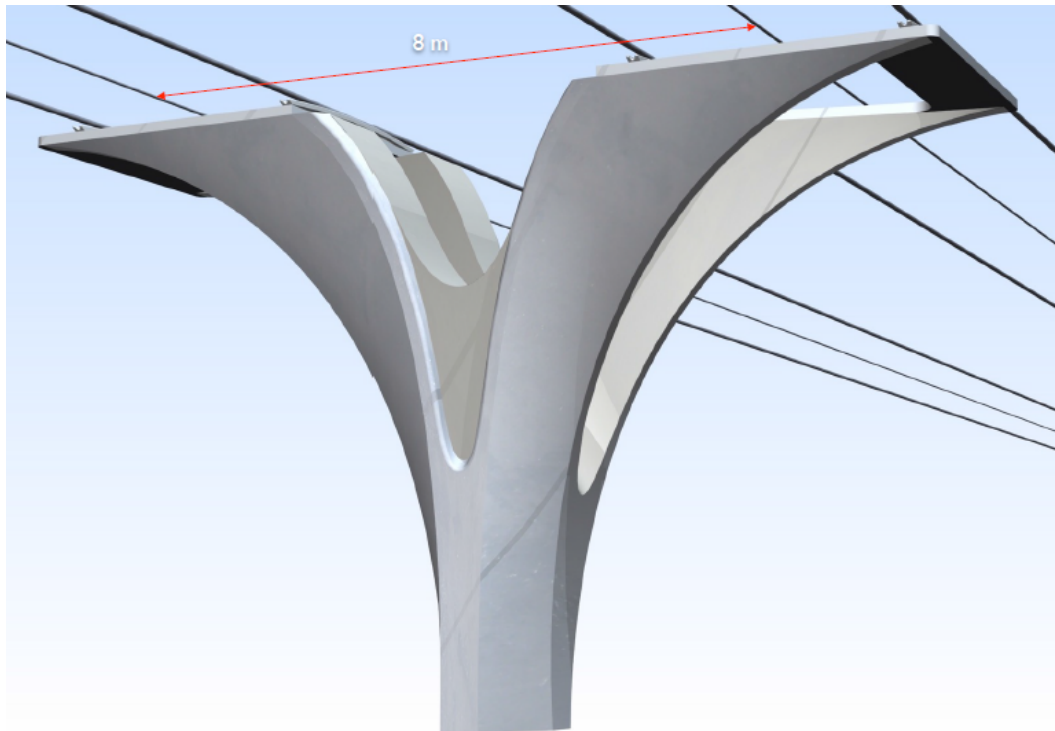


Cabin capacity:
40 seats

Automatic doors, lighting, cctv,
loudspeakers, air conditioning, PA /
AV system.

Full stop in station, safe and secure
boarding (strollers & wheelchairs
and elderly)

CABLIME features



- Cabins travelling **over the ropes**
- **Lanes** consist of **supersized carrying ropes** (50 to 60 mm diameter) to **minimize sag.**
- **Wide lanes (3m)** with **hauling cables in the center.**
- **Compact stations**

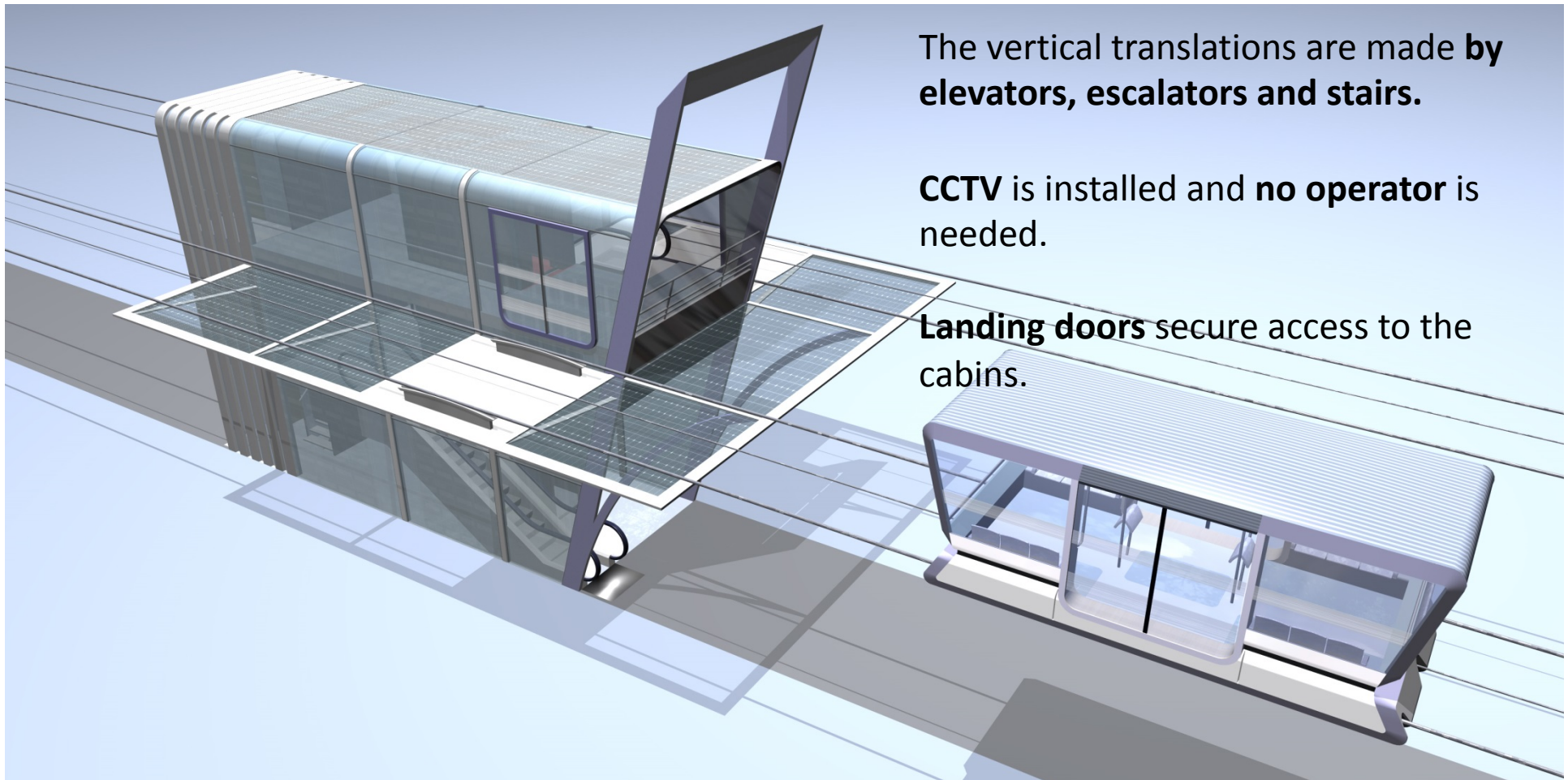
CABLIME features

The Stations support the carrying cables forces.

The vertical translations are made by elevators, escalators and stairs.

CCTV is installed and no operator is needed.

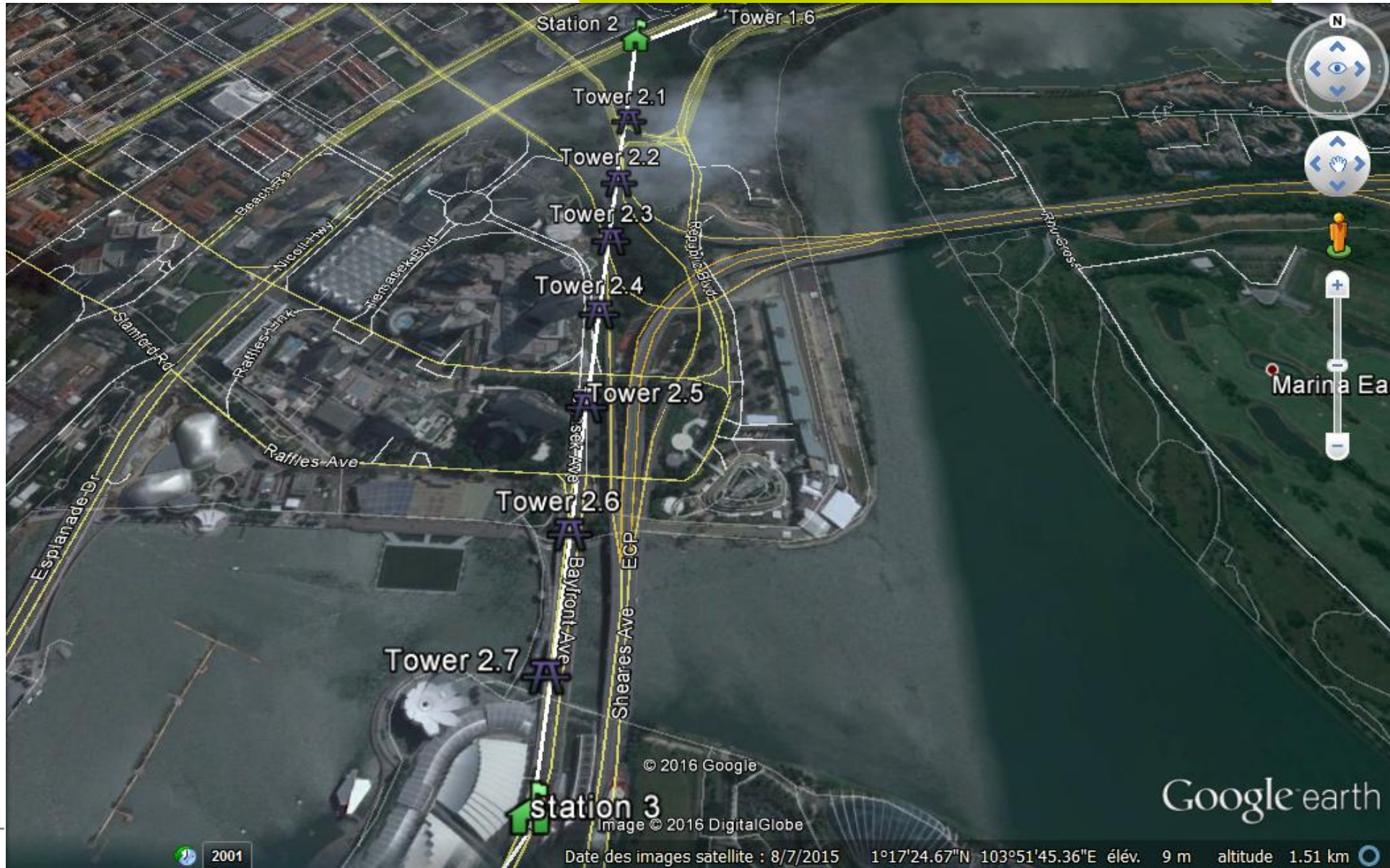
Landing doors secure access to the cabins.



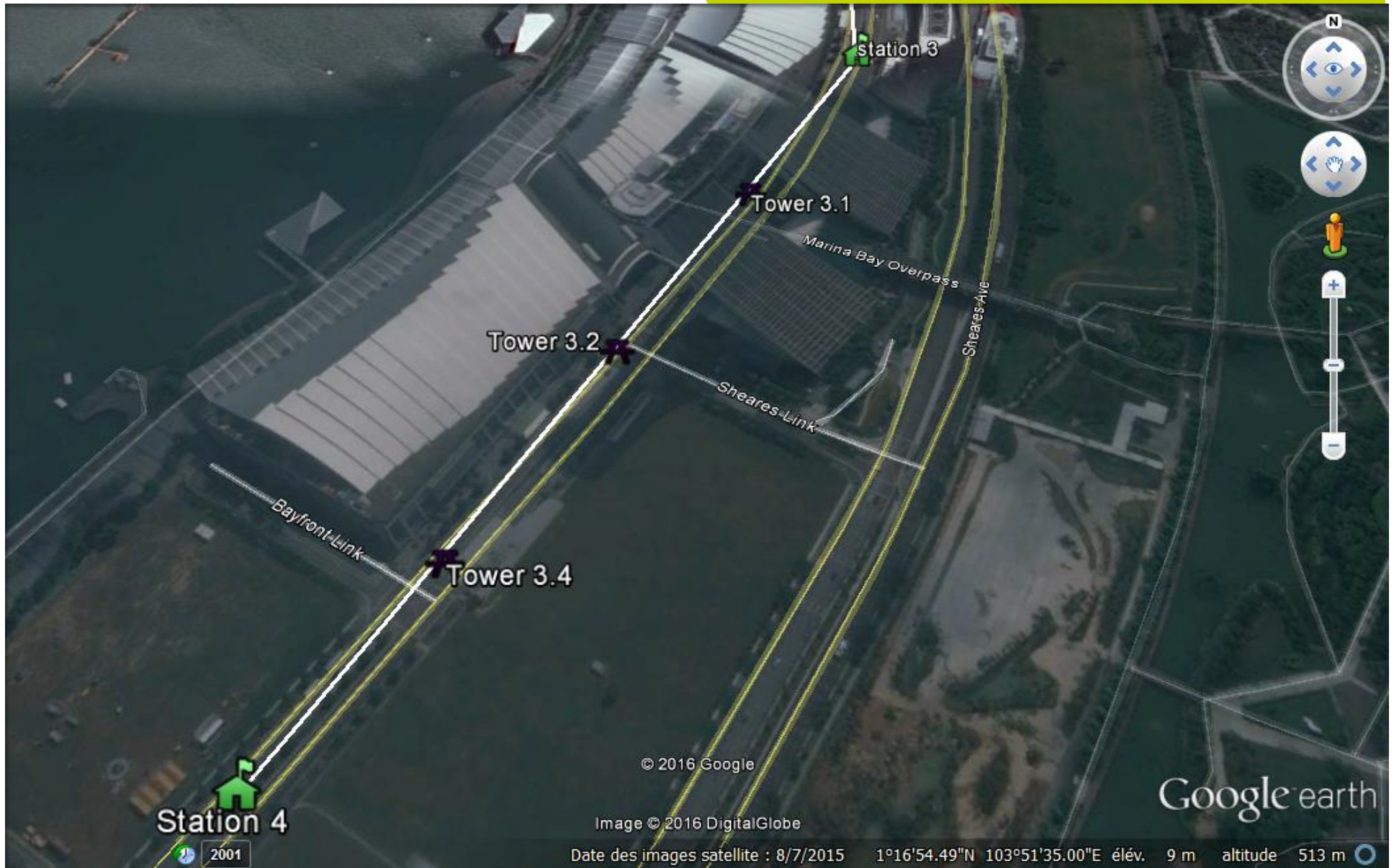
Inter-station 1



Inter-station 2



Inter-station 3



Budget Estimate

	kEUR (taxes excluded)
Vehicles (40 places)	12 370
Equipment of stations & Engines	5 400
Electrical equipment	4 000
Line (cables and associated equipment)	6 050
Design and Tests	2 760
Stations Buildings & garage	16 000
Civil Works (including towers)	6 500
Works	2 800
Miscellaneous (electrical works, controls,..)	1 600
Total Price Ex Works excluding taxes (k€ HT)	57 480

Estimation in France surroundings with +/- 10% accuracy at this stage/ excluding specific works (geotechnical difficulties, towers settled in the sea,..)

Time Schedule

